

# UHB-ZK系列 耐腐耐磨泵

UHB-ZK Series Corrosion and Abrasion Resistant Pumps

■ 国家重点新产品

National Key New Product

■ 江苏省名牌产品

Famous Brand of Jiangsu Province

■ 多项专利保护

Patents Protected

**一样的衬塑泵 不一样的质量**

*Quality that differs from other plastics-lined pumps*

## 原因是: *The reason*

本公司生产的衬塑泵全部采用专利技术**龟甲网衬里**，攻克了衬里泵金属外壳与内衬塑料热胀冷缩变形不同步，因而引起的变形，开裂的固疾，尤其解决了大型衬塑泵因衬里层开裂而质量不稳定的难题。

Our plastics-lined pumps all use the patented hexmetal lining which resolved deformation and cracking due to the different heat expansion and cold shrinking of the metal case of the pump and the lining plastics, especially resolved the difficult problem of unstable quality caused by cracked lining on large plastics-lined pumps.

## 技术特征 *Technical Features*

- 龟甲网衬里，防衬层开裂、变形、脱落。  
Hexmetal lining to prevent the lining layer from cracking, deformation, drop.
- 耐腐耐磨  
Corrosion and Abrasion Resistant

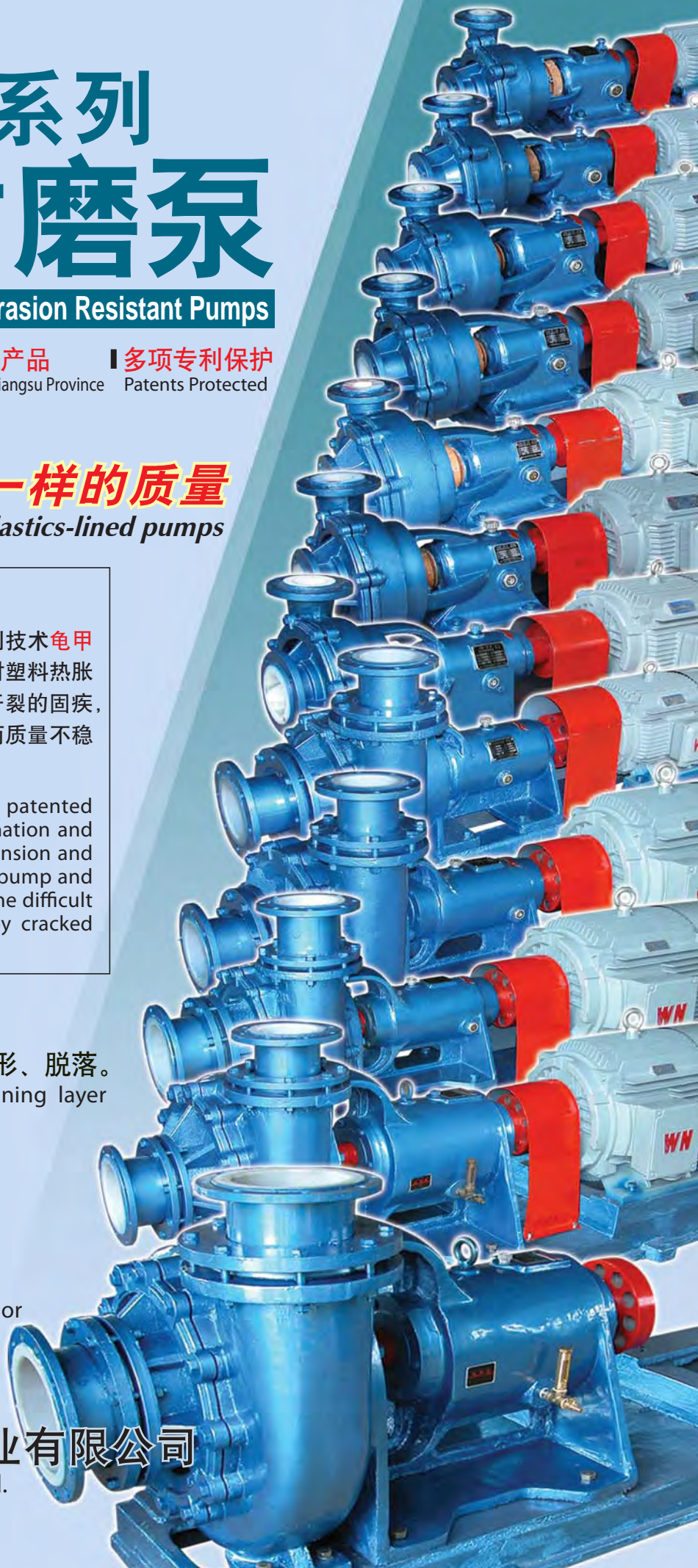
## 适用 *Application*

- 输送腐蚀性料浆和清液  
Pumping of corrosive pulp and liquor



宜兴市宙斯泵业有限公司

Yixing Zeus Pump Co., Ltd.





# 宙斯理念 以质量铸品牌 以品种造优势 以诚信建市场 以服务创未来



**宜**兴市宙斯泵业有限公司(原张泽化工设备厂), 一个以专业生产衬里型防腐耐磨泵、耐腐泵为特色的厂家, 占地面积60000余平方米, 建筑面积30000余平方米, 拥有固定资产3000余万元, 有各类加工、检测设备200余台套, 年产各种泵类产品9000余台套。年销售额超5000余万元的规模企业, 公司已连续六年被宜兴市评为文明纳税大户和先进企业。

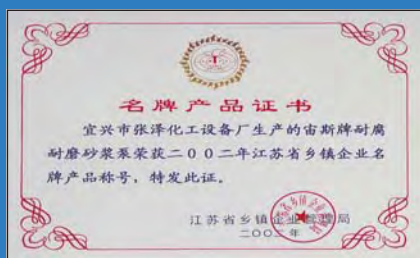
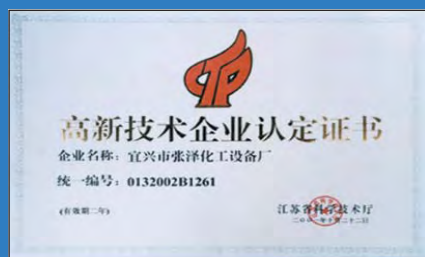
Yixing Zeus Pump Co., Ltd. (formerly the Zhangzhe Chemical Equipment Factory) is a specialized manufacturer of lined type corrosion and abrasion resistant pumps. The company takes a land of over 60,000sqm on which is the 30,000sqm more construction buildings, and with fixed assets worth over 30 million RMB Yuan including 200+ sets of processing and testing equipment, production capacity reached 9,000 sets of pumps per annum and annual sales was over 50 million RMB Yuan. The company has received Civilized Big Tax Payer and Advanced Enterprise of Yixing awards for a consecutive six years.

宙斯泵业长期坚持以诚信建市场; 以质量铸品牌; 以品种造优势; 以服务创未来的经营理念。在全国近6000家用户中树立了良好的形象, 企业的知名度、美誉度不断提高。近年来客户源纷纷而至, 企业蒸蒸日上, 耐腐耐磨泵的生产规模和产量已跃居行业之先, 成为全国非金属泵业中的生力军。产品获得了江苏省名牌产品、国家高新技术产品等多项荣誉, 同时公司被认定为环保产业协会、全国硫磷协会、中国石油天然气集团网络成员单位, 原化工部工程建设泵类产品定点选用单位。

The company has been stick to the business idea of Win Market by Sincerity, Establish Brand by Quality, Get Advance by Variety, and Usher in Future by Service, and was well received among nearly 6,000 users nationwide and enjoyed a good reputation. Over the years, the market has been expanding, and our turnover leads the industry and we become the main producer of non-metal pumps in the nation. The product has won Famous Brand of Jiangsu Province, National Key New Product, and many other honors. In the meantime, the company recognized member of the Association of Environmental Protection Industry, National Sulfur-Phosphor Association, China Oil & Gas Group network, and was the designated provider of engineering construction pumps by the former Chemical Department.

公司坚持走科技兴厂之路, 在产品设计上, 公司逐一解决了耐腐蚀泵材料耐磨性的改良, 衬层的脱落、密封寿命短、塑料泵泵体抗蠕变性差、使用温度低等四大行业性难题。产品的技术水平已达到行业领先地位。这些先进的技术, 目前已成为企业市场竞争制胜的核心技术能力。企业先后研发了二个国家级重点新产品, 现有专利技术46多项, 企业被认定为省高新技术企业。

## 企业资质与荣誉



# Motto

**Establish Brand by Quality, Get Advance by Variety  
Win Market by Sincerity, Usher in Future by Service**

The company persist in the course of developing by science and technology. With the renovation of the material of the corrosion resistant pump for improved abrasion resistance, it has resolved four difficult problems in the industry: drop of the lining layer, short working life of sealing, bad creep resistance of the case of the plastic pump, and low working temperature. The technology level is in the leading position in the industry. With these technologies, we have gain core competitiveness. Two state-level key new products were developed from us and now we own 46 patents, the company was recognized new hi-tech enterprise of the province.

为满足用户多样性的需求，实行多品种大批量的战略是宙斯泵业的一个特点。公司现有20多个系列、2000多个规格的产品供用户选择，产品材料的多样性、结构的多样性、密封的多样性，能满足输送不同化学性质、不同浓度、不同温度、不同复杂工况的需求。产品广泛适用于化工、染料、有色冶炼、非金属矿产加工、环保等行业。

To meet the diversified needs of customers, we implemented the strategy of added varieties and mass production. Currently there are over 2,000 specs in 20 plus series available for selection. With varied material, structure, sealing of the pumps, pumping of materials of varied chemical properties, thickness, temperature, and working conditions are met. The pumps are extensively applicable to chemical, dye, non-ferrous metallurgical, non-metallic mineral processing, environmental protection, and other industries.

在激烈的市场竞争中，公司以明显的品种、质量、品牌、价格、服务、诚信六大优势作为经营支点，以不断进取的精神为驱动力，取得了市场竞争的胜利，但离我们要在行业中做优、做强的目标尚有距离，我们期望也欢迎和更多的用户建立共事共荣的朋友加客户的合作关系。谢谢你的支持！

We have had great achievements in the fierce market competition backed our six advantages: variety, quality, brand, price, service, sincerity, and driven by the spirit of uninterrupted progress. We expect your cooperation for mutual benefits, thank you!

● 欢迎登陆公司网站 Please visit: [www.zsby.com](http://www.zsby.com)

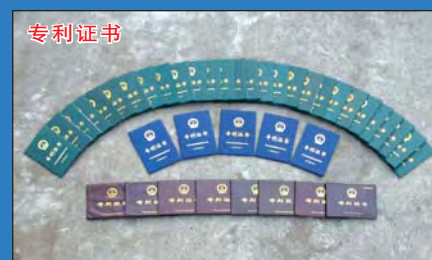
● 公司实名 Company Name: 宙斯泵业

● 产品实名 Product Keywords:

- |           |              |
|-----------|--------------|
| ● 稀酸泵     | ● 防腐塑料泵      |
| ● 料浆泵     | ● 衬氟塑料泵      |
| ● 工程塑料耐磨泵 | ● 防腐自吸泵      |
| ● 耐腐耐磨泵   | ● 宙斯压滤机泵     |
| ● 耐磨塑料泵   | ● UHB耐腐耐磨砂浆泵 |



## Qualification & Certificates





## 敬告 Warning

▲ 该系列泵禁止在泵内无液的状态下运转，但接通冷却水后，则可以短时间空运行(30分钟以内)。

This series of pumps are prohibited to run without liquid in the pump, but with cooling water connected, empty-run within 30 minutes are ok.

▲ 出液阀门全关闭的情况下，开闷泵不得超过十分钟，不然泵内液体升温损坏泵机衬里层。

Under complete close status of the outlet valve, running of the pump should not be over ten minutes, otherwise the lining layer would be damaged due to high temperature of the liquid in the pump.

▲ 吸程在2米以内的岗位慎选。

Select with care for position with a lift under 2 meters.

## 一、产品简介 Introduction

UHB-ZK系列耐腐耐磨泵属单级单吸悬臂式离心泵，过流部件采用钢衬超高分子量聚乙烯(UHMWPE)。该材质是目前国际上新一代的泵用耐腐耐磨工程塑料，其最突出的优点是在所有的塑料中它具有优异的耐磨性、耐冲击性(尤其是耐低温冲击)、抗蠕变性(耐环境应力开裂)和极好的耐腐蚀性。

该泵显著特点是：**多功能**，即一种泵能适应各种不同的工况，如输送酸、碱性清液或料浆；冶炼行业各种腐蚀性矿浆；硫酸行业各类稀酸；环保行业各类污水等。该泵既耐腐蚀又耐磨损，使用范围十分广泛。

该泵在辽宁葫芦岛锌厂等三百多家大型有色冶炼和硫酸企业的酸性矿浆和稀酸岗位的长期比较使用，其耐腐耐磨性、密封可靠性、使用寿命性，均得到了极高的评价。

UHB-ZK series corrosion and abrasion resistant pumps are of single-stage single-suction cantilever type centrifugal pump, the flow passage components are made of steel-lining ultra high molecular weight polyethylene (UHMWPE) which is the new generation corrosion and abrasion resistant engineering plastics for pumps in the world, the most unique feature of it is its excellent abrasability, shock-resistance (especially the low temperature shock), creep resistance (resistance to environmental stress cracking), and very good corrosion resistance.

The most unique feature of the pumps is MULTI-FUNCTION, one pump could be suitable for different working conditions such as pumping of acid and alkaline liquor or material pulp, metallurgical corrosive ore pulp, diluted acids, sewage, etc. It is corrosion resistant and at the same time abrasion resistant, so its application is very extensive.

Its performance of corrosion and abrasion resistance, reliability of sealing, and working life are highly appraised among over 300 large non-ferrous metallurgical and sulphuric acid enterprises including Huludao Zinc Plant of Liaoning Province after their practical use and comparison on acid pulp and diluted acid positions.

### (一) 主要技术性能简述 Main Technical Performance

① 型号：UHB-ZK系列耐腐耐磨泵

② 结构与特点：(1) 耐腐耐磨，一泵多用，酸碱类清液料浆均适用。

(2) 泵体为钢衬超高分子量聚乙烯结构，衬层厚8~20mm，该泵应用了**龟甲网衬里专利技术**，和其它同类泵相比较，**具有衬里层抗热变形性能好，耐开裂，防脱落，使用温度高等优势。**

(3) 叶轮分开式，闭式二种，可根据介质状况任选。

(4) 密封：K型动力密封。

③ 适用介质：浓度80%以下硫酸，50%以下硝酸，各种浓度的盐酸，液碱，既适用清液也适用料浆。

④ 主要技术参数：使用温度-20℃~80℃(对特殊要求、使用改性材质，可提高到105℃)，进口直径 32mm~350mm，流量5~2000m³/h，扬程50m以内。

## ① Model: UHB-ZK series corrosion and abrasion resistant pumps

### ② Structure & Feature:

- (1). Corrosion and abrasion resistant, multi-purpose, suitable for acid and alkaline liquor or pulp.
- (2). UHMWPE case with a lining thickness of 8~20mm. By adopting the patented hexmetal lining technology, it features good anti-thermal deformation, anti-cracking, drop-proof, and high working temperature etc.
- (3). There are open and closed type vanes for you to select according to medium conditions.

### ③ (4). Sealing: K-type dynamic seal.

**Suitable Medium:** sulphuric acid with a density below 80%, nitric acid with a density below 50%, hydrochloric acid of any density, liquid caustic soda, both liquor and pulp.

**Main Technical Parameters:** working temperature: -20℃ ~ 80℃ (with the use of modified materials, it could reach 105℃ for special requirement); inlet diameter: 32mm~350mm; flow rate: 5~2000m<sup>3</sup>/h; hoisting height: with 50 meters.

## (二)极广泛的使用范围 Extensive Applications

- ① **硫酸磷肥业:** 稀酸、母液、污水、海水、含硅胶的氟硅酸, 磷酸料浆等介质的输送。
- ② **有色金属冶炼业:** 特别适用于铅、锌、金、银、铜、锰、钴、稀土等湿法冶炼的各种酸液, 腐蚀性矿浆, 料浆(压滤机配用)电解液, 污水等介质输送。
- ③ **化工及其它企业:** 各种硫酸、盐酸、碱性、油类的清液或料浆岗位。钛白粉、铁红粉生产, 各种染料、颜料生产, 非金属矿产加工等行业。
- ④ **氯碱业:** 盐酸、液碱、电解液等。
- ⑤ **水处理业:** 纯水、高纯水、污水(皮革污水、电镀污水、电子污水、造纸污水、纺织污水、食品污水、生活污水、制药业污水等等)。
- ⑥ **钢铁企业:** 酸洗系统的硫酸、盐酸岗位、带杂质的污水。
- ⑦ **湿式脱硫循环泵:** 能同时适用碱性、酸性、腐蚀性岗位。
- ⑧ **煤碳工业、煤化工中的腐蚀性液体、煤浆的输送:** 洗选煤配用泵。
- ① **Sulphuric acid phosphate fertilizer industries:** pumping of diluted acid, mother liquid, sewage, sea water, fluosilicic acid with silica gel content, phosphate pulp, and other medium.
- ② **Non-ferrous metallurgical industry:** especially suitable for pumping of acid liquids from hydrometallurgy of lead, zinc, gold, silver, copper, manganese, cobalt, rare earth etc., and corrosive ore pulp, material pulp (for filtering press), electrolyte, sewage, etc.
- ③ **Chemical and other enterprises:** sulphuric acid, hydrochloric acid, alkaline, oil liquor or pulp positions; titan white, iron-red powder production, dye and pigment production, nonmetallic mineral processing, etc.
- ④ **Alkali chloride industry:** hydrochloric acid, liquid caustic soda, electrolyte, etc.
- ⑤ **Water treatment industry:** purifying, high purifying, sewage and waste water of leather, electroplating, electronics, paper making, textile, food, pharmaceutical industries and sanitary sewage.
- ⑥ **Steel enterprise:** sulphuric acid, hydrochloric acid position of acid washing system, impurity waste water.
- ⑦ **Wet desulphurizing circulation pump:** suitable for alkali, acid, corrosive positions all.
- ⑧ Pumping of corrosive liquid, coal pulp of coal industry and coal chemistry. And for coal washing and selection.

## 选型提示 Selection

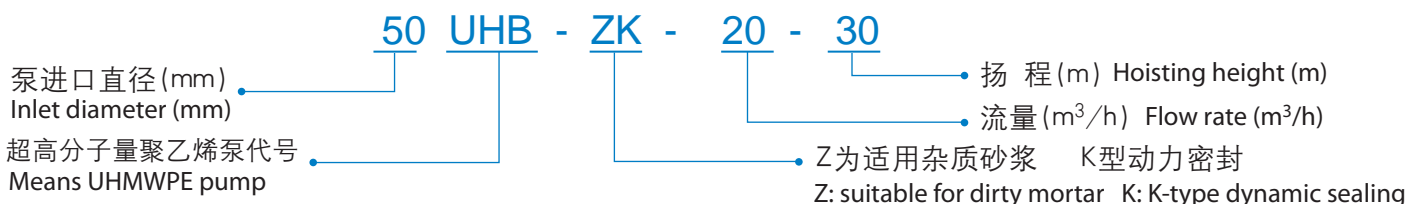
▲ UHB-ZK系列耐腐耐磨泵，可根据用户的要求安装不带冷却水的动力密封，如用户无特别要求时本厂出厂的泵一般均是安装带水冷却的密封。

UHB-ZK series corrosion and abrasion resistant pumps could be made to equip with dynamic sealing without cooling water according to customer requirement, otherwise the product is of with water-cooled sealing.

▲ 订货时请用户提供以下工况：介质化学成份、工作温度、含固量、实际使用压力及流量、吸入口流体的位置及压力(正压还是负压)以及使用岗位名称及使用特点，以便本厂为你选定最合适的密封材料。

Please provide the following conditions when placing an order: chemical composition of medium, working temperature, solids content, actual working pressure, flow rate, position of fluid inlet and pressure (positive pressure of negative), and description of applied position and application characteristics, for us to choose the most suitable sealing material for you.

## 二、型号含义说明 Explanation of Model Code



## 三、泵的性能参数 Performance Parameters

序号 No	型 号 Model	流量(m <sup>3</sup> /h) Flow Rate (m <sup>3</sup> /h)	扬程(m) Hoisting Height (m)	转速 (r/min) Rotation Speed (rpm)	功率(kw) Power (kw)		进出口直径 (mm×mm) Diameter of Inlet and Outlet (mm×mm)	重量 (kg) Weight (kg)
					轴功率 Shaft Power	配备电机 Motor		
1	32UHB-ZK-3-13	3	13	2900	0.3	0.75	32 × 25	80
2	32UHB-ZK-5-12	5	12	2900	0.42	0.75		
3	32UHB-ZK-7-10	7	10	2900	0.5	0.75		
4	32UHB-ZK-5-5	5	5	1450	0.25	0.75		
5	32UHB-ZK-3-18	3	18	2900	0.4	1.1		
6	32UHB-ZK-5-15	5	15	2900	0.55	1.1		
7	32UHB-ZK-8-12	8	12	2900	0.7	1.1		
8	32UHB-ZK-5-20	5	20	2900	0.72	1.1		
9	32UHB-ZK-8-18	8	18	2900	1.2	1.5		
10	32UHB-ZK-12-15	12	15	2900	1.3	2.2		
11	32UHB-ZK-5-25	5	25	2900	1.1	2.2		
12	32UHB-ZK-10-20	10	20	2900	1.6	2.2		
13	32UHB-ZK-15-15	15	15	2900	1.7	2.2		
14	32UHB-ZK-7.5-6	7.5	6	1450	0.4	0.75		
15	40UHB-ZK-10-18	10	18	2900	1.3	2.2	40 × 32	130
16	40UHB-ZK-15-15	15	15	2900	1.7	2.2		
17	40UHB-ZK-10-30	10	30	2900	2.2	3		
18	40UHB-ZK-15-25	15	25	2900	2.7	3		
19	40UHB-ZK-18-20	18	20	2900	2.6	3		
20	50UHB-ZK-10-7.5	10	7.5	1450	0.6	1.1	50 × 40	170
21	50UHB-ZK-10-35	10	35	2900	3.2	4		
22	50UHB-ZK-20-20	20	20	2900	3.0	4		
23	50UHB-ZK-25-18	25	18	2900	3.2	4		
24	50UHB-ZK-30-15	30	15	2900	3.1	4		
25	50UHB-ZK-15-32	15	32	2900	3.5	5.5		
26	50UHB-ZK-20-30	20	30	2900	4.3	5.5		
27	50UHB-ZK-25-28	25	28	2900	5.0	5.5		
28	50UHB-ZK-12-40	12	40	2900	3.8	5.5		
29	50UHB-ZK-15-43	15	43	2900	5.6	7.5		
30	65UHB-ZK-15-8	15	8	1450	0.9	1.1	65 × 50	220
31	65UHB-ZK-30-25	30	25	2900	5.3	5.5		
32	65UHB-ZK-35-20	35	20	2900	5.1	5.5		
33	65UHB-ZK-40-15	40	15	2900	4.5	5.5		
34	65UHB-ZK-30-32	30	32	2900	6.5	7.5		
35	65UHB-ZK-35-25	35	25	2900	6.2	7.5		
36	65UHB-ZK-40-20	40	20	2900	5.9	7.5		
37	65UHB-ZK-5-11	5	11	1450	0.6	1.1	65 × 50	270
38	65UHB-ZK-10-12.5	10	12.5	1450	1.2	2.2		

序号 No	型 号 Model	流量(m <sup>3</sup> /h) Flow Rate (m <sup>3</sup> /h)	扬程(m) Hoisting Height (m)	转速 (r/min) Rotation Speed (rpm)	功率(kw) Power (kw)		进出口直径 (mm×mm) Diameter of Inlet and Outlet (mm×mm)	重量 (kg) Weight (kg)
					轴功率 Shaft Power	配备电机 Motor		
39	65UHB-ZK-15-12.5	15	12.5	1450	1.6	2.2	65 × 50	270
40	65UHB-ZK-10-45	10	45	2900	4.8	7.5		
41	65UHB-ZK-10-40	10	40	2900	4.2	5.5		
42	65UHB-ZK-20-50	20	50	2900	8.7	11		
43	65UHB-ZK-30-50	30	50	2900	12	15		
44	65UHB-ZK-30-40	30	40	2900	9.6	11		
45	65UHB-ZK-10-55	10	55	2900	8.6	11		
46	65UHB-ZK-B-10-50	10	50	2900	5.1	7.5		
47	65UHB-ZK-B-10-55	10	55	2900	8.6	11		
48	65UHB-ZK-B-20-50	20	50	2900	8.7	11		
49	65UHB-ZK-B-20-55	20	55	2900	11.8	15		
50	65UHB-ZK-B-30-50	30	50	2900	12	15		
51	65UHB-ZK-B-30-55	30	55	2900	15.3	18.5	65 × 50	330
52	65UHB-ZK-20-20	20	20	1450	3.2	4		
53	65UHB-ZK-35-15	35	15	1450	5.1	5.5		
54	65UHB-ZK-30-20	30	20	1450	5.0	5.5		
55	65UHB-ZK-35-20	35	20	1450	5.8	7.5	65 × 50	350
56	65UHB-ZK-AH-10-70	10	70	2900	8.4	11		
57	65UHB-ZK-AH-15-70	15	70	2900	11.2	15		
58	65UHB-ZK-AH-25-70	25	70	2900	15.9	18.5		
59	65UHB-ZK-AH-30-60	30	60	2900	18.9	22	80 × 65	270
60	80UHB-ZK-17.5-11	17.5	11	1450	1.5	2.2		
61	80UHB-ZK-22.5-12.5	22.5	12.5	1450	2.3	3		
62	80UHB-ZK-40-20	40	20	2900	5.8	7.5		
63	80UHB-ZK-45-18	45	18	2900	6.1	7.5		
64	80UHB-ZK-50-15	50	15	2900	5.6	7.5		
65	80UHB-ZK-35-45	35	45	2900	10.8	11		
66	80UHB-ZK-40-35	40	35	2900	10.2	11		
67	80UHB-ZK-45-32	45	32	2900	10.1	11		
68	80UHB-ZK-50-30	50	30	2900	10.2	11		
69	80UHB-ZK-60-30	60	30	2900	12.6	15		
70	80UHB-ZK-45-50	45	50	2900	14.8	15	80 × 65	750
71	80UHB-ZK-55-40	55	40	2900	15.8	18.5		
72	80UHB-ZK-40-40	40	40	1450	10.6	11		
73	80UHB-ZK-30-50	30	50	1450	9.98	11		
74	80UHB-ZK-40-50	40	50	1450	13.6	15		
75	80UHB-ZK-30-60	30	60	1450	15.9	18.5		
76	80UHB-ZK-50-56	50	56	1450	18.6	22		
77	80UHB-ZK-40-60	40	60	1450	18.1	22	80 × 65	370
78	80UHB-ZK-60-55	60	55	1450	21.9	30		
79	80UHB-ZK-AH-20-60	20	60	2900	10.3	15		
80	80UHB-ZK-AH-20-75	20	75	2900	13.4	15		
81	80UHB-ZK-AH-25-75	25	75	2900	15.3	18.5		
82	80UHB-ZK-AH-30-70	30	70	2900	19.6	22	100 × 80	370
83	80UHB-ZK-AH-35-65	35	65	2900	22.5	30		
84	80UHB-ZK-AH-40-60	40	60	2900	22.6	30		
85	100UHB-ZK-50-11	50	11	1450	4.2	5.5		
86	100UHB-ZK-80-15	80	15	2900	10.2	11		
87	100UHB-ZK-60-30	60	30	2900	13.8	15	100 × 80	370
88	100UHB-ZK-100-20	100	20	2900	15	15		
89	100UHB-ZK-50-50	50	50	2900	17.5	18.5		
90	100UHB-ZK-60-40	60	40	2900	16.8	18.5		
91	100UHB-ZK-80-35	80	35	2900	17.8	18.5		
92	100UHB-ZK-80-30	80	30	2900	17.5	18.5		
93	100UHB-ZK-100-25	100	25	2900	17.9	18.5		
94	100UHB-ZK-100-20	100	20	2900	17.2	18.5		
95	100UHB-ZK-140-15	140	15	2900	16.8	18.5		
96	100UHB-ZK-100-20	100	20	2900	16.2	18.5		
97	100UHB-ZK-120-15	120	15	2900	17.1	18.5	100 × 80	370
98	100UHB-ZK-140-10	140	10	2900	16.4	18.5		
99	100UHB-ZK-50-58	50	58	2900	21	22		
100	100UHB-ZK-60-50	60	50	2900	21.5	22		
101	100UHB-ZK-100-27	100	27	2900	18.4	22		
102	100UHB-ZK-70-45	70	45	2900	23.5	30		
103	100UHB-ZK-80-50	80	50	2900	27	30		
104	100UHB-ZK-100-45	100	45	2900	28	30	100 × 80	950
105	100UHB-ZK-120-40	120	40	2900	28.5	30		
106	100UHB-ZK-145-28	145	28	2900	29.5	30		
107	100UHB-ZK-80-35	80	35	1450	19.3	22		
108	100UHB-ZK-80-40	80	40	1450	22.3	30		
109	100UHB-ZK-60-70	60	70	1450	35.9	37		
110	100UHB-ZK-60-65	60	65	1450	33.6	37		
111	100UHB-ZK-50-70	50	70	1450	31.4	37		
112	100UHB-ZK-80-60	80	60	1450	35.9	37		

序号 No	型 号 Model	流量(m³/h) Flow Rate (m³/h)	扬程(m) Hoisting Height (m)	转速 (r/min) Rotation Speed (rpm)	功率(kw) Power (kw)		进出口直径 (mm×mm) Diameter of Inlet and Outlet (mm×mm)	重量 (kg) Weight (kg)
					轴功率 Shaft Power	配备电机 Motor		
113	100UHB-ZK-80-50	80	50	1450	40.3	45	100 × 80	950
114	100UHB-ZK-100-57	100	57	1450	37.9	45		
115	100UHB-ZK-80-65	80	65	1450	40.3	45		
116	100UHB-ZK-120-50	120	50	1450	39.9	45		
117	100UHB-ZK-100-65	100	65	1450	48.9	55		
118	100UHB-ZK-120-60	120	60	1450	51.5	55		
119	100UHB-ZK-AH-40-75	40	75	2900	28	30	100 × 80	480
120	100UHB-ZK-AH-50-80	50	80	2900	32.5	37		
121	100UHB-ZK-AH-50-70	50	70	2900	30	37		
122	100UHB-ZK-AH-60-80	60	80	2900	33.6	37		
123	100UHB-ZK-AH-80-60	80	60	2900	35.4	37		
124	125UHB-ZK-120-20	120	20	2900	17.2	18.5	125 × 100	480
125	125UHB-ZK-140-18	140	18	2900	21	22		
126	125UHB-ZK-150-15	150	15	2900	21.5	22		
127	125UHB-ZK-100-40	100	40	2900	28.8	30		
128	125UHB-ZK-120-35	120	35	2900	29.4	30		
129	125UHB-ZK-140-25	140	25	2900	25	30		
130	125UHB-ZK-120-32	120	32	2900	26.8	30		
131	125UHB-ZK-140-28	140	28	2900	27.6	30		
132	125UHB-ZK-160-24	160	24	2900	28.1	30		
133	125UHB-ZK-80-15	80	15	1450	10.2	11		
134	125UHB-ZK-80-15	80	15	980	10.2	11		
135	125UHB-ZK-100-40	100	40	1450	28.8	30		
136	125UHB-ZK-120-35	120	35	1450	29.4	30	125 × 100	950
137	125UHB-ZK-140-25	140	25	1450	25	30		
138	125UHB-ZK-120-32	120	32	1450	26.8	30		
139	125UHB-ZK-140-28	140	28	1450	27.6	30		
140	125UHB-ZK-100-50	100	50	1450	33.2	37		
141	125UHB-ZK-120-40	120	40	1450	32.1	37		
142	125UHB-ZK-100-60	100	60	1450	40.5	45		
143	125UHB-ZK-120-50	120	50	1450	38.5	45		
144	125UHB-ZK-100-65	100	65	1450	47.6	55		
145	125UHB-ZK-120-60	120	60	1450	49.2	55		
146	125UHB-ZK-140-56	140	56	1450	46.9	55		
147	125UHB-ZK-150-56	150	56	1450	50.3	55	125 × 100	950
148	125UHB-ZK-180-40	180	40	1450	48.5	55		
149	150UHB-ZK-180-14	180	14	1450	28.2	30		
150	150UHB-ZK-60-16	60	16	1450	28	30		
151	150UHB-ZK-150-20	150	20	1450	24.5	30		
152	150UHB-ZK-120-25	120	25	1450	24.5	30		
153	150UHB-ZK-138-8	138	8	980	10.5	11		
154	150UHB-ZK-190-18	190	18	1450	19.8	22		
155	150UHB-ZK-210-26	210	26	1450	36.4	37		
156	150UHB-ZK-240-24	240	24	1450	35.2	37		
157	150UHB-ZK-270-20	270	20	1450	36	37		
158	150UHB-ZK-148-11	148	11	980	13.6	15	150 × 125	1000
159	150UHB-ZK-101-18	101	18	980	12.8	15		
160	150UHB-ZK-80-11	80	11	980	8.9	11		
161	150UHB-ZK-120-40	120	40	1450	33.6	37		
162	150UHB-ZK-150-40	150	40	1450	42	45		
163	150UHB-ZK-200-32	200	32	1450	43.4	45		
164	150UHB-ZK-250-30	250	30	1450	41.5	45		
165	150UHB-ZK-300-25	300	25	1450	42.3	45		
166	150UHB-ZK-AH-120-70	120	70	1450	45.8	55		
167	150UHB-ZK-AH-150-70	150	70	1450	58.9	75		
168	150UHB-ZK-AH-180-70	180	70	1450	68.6	75		
169	200UHB-ZK-215-10	215	10	980	15.6	18.5	150 × 125	1200
170	200UHB-ZK-210-14	210	14	980	18.4	18.5		
171	200UHB-ZK-168-20	168	20	980	27	30		
172	200UHB-ZK-320-24	320	24	1450	37.3	45		
173	200UHB-ZK-350-20	350	20	1450	37.1	45		
174	200UHB-ZK-400-18	400	18	1450	38.3	45		
175	200UHB-ZK-500-12	500	12	1450	38.6	45		
176	200UHB-ZK-320-32	320	32	1450	51.8	55		
177	200UHB-ZK-350-28	350	28	1450	45.2	55		
178	200UHB-ZK-400-25	400	25	1450	70	75		
179	200UHB-ZK-250-45	250	45	1450	74	75		
180	200UHB-ZK-300-38	300	38	1450	69.5	75	200 × 150	2200
181	200UHB-ZK-350-34	350	34	1450	67.3	75		
182	200UHB-ZK-AH-200-70	200	70	1450	76.3	90		
183	200UHB-ZK-AH-280-70	280	70	1450	106.7	110		
184	200UHB-ZK-AH-300-70	300	70	1450	114.3	132		
185	200UHB-ZK-AH-350-70	350	70	1450	133.4	160		
186	250UHB-ZK-270-14	270	14	980	21.5	30	250 × 200	2200
187	250UHB-ZK-270-20	270	20	980	31.8	37		
188	250UHB-ZK-600-20	600	20	1450	68.4	75		
189	250UHB-ZK-400-32	400	32	1450	76.8	90		

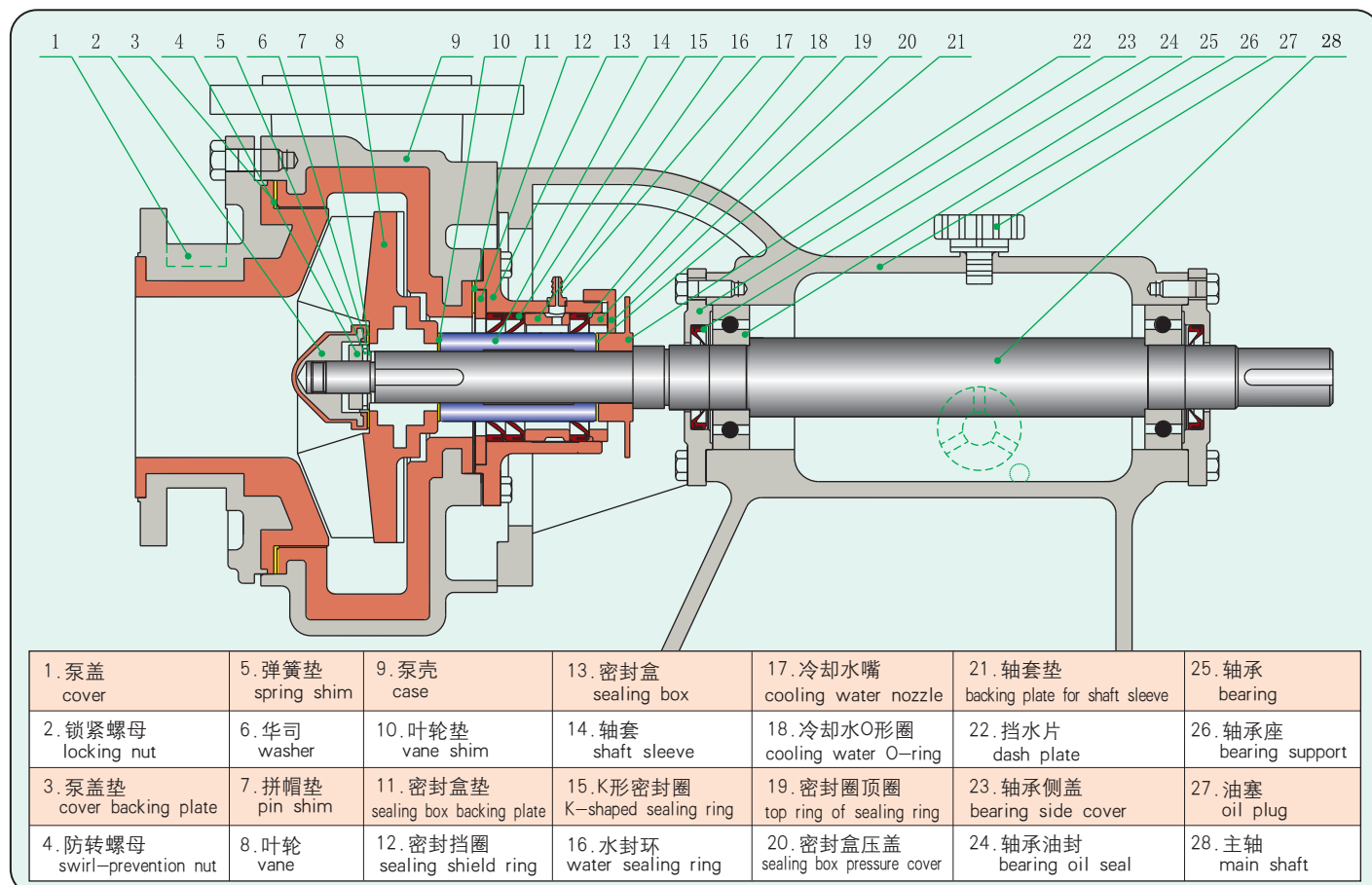


序号 No	型 号 Model	流量(m³/h) Flow Rate (m³/h)	扬程(m) Hoisting Height (m)	转速 (r/min) Rotation Speed (rpm)	功率(kw) Power (kw)		进出口直径 (mm×mm) Diameter of Inlet and Outlet (mm×mm)	重量 (kg) Weight (kg)
					轴功率 Shaft Power	配备电机 Motor		
190	250UHB-ZK-500-26	500	26	1450	78.3	90	250 × 200	2200
191	250UHB-ZK-400-45	400	45	1450	108.9	110		
192	250UHB-ZK-500-37	500	37	1450	100.7	110		
193	250UHB-ZK-600-30	600	30	1450	98	110		
194	300UHB-ZK-675-15	675	15	980	47.23	55	350 × 250	3400
195	300UHB-ZK-675-22.8	675	22.8	980	72.3	75		
196	300UHB-ZK-900-21	900	21	980	98.2	110		
197	300UHB-ZK-1050-22	1050	22	980	107.8	110		
198	300UHB-ZK-960-27.4	960	27.4	980	122.7	132		
199	300UHB-ZK-860-33	860	33	1450	127.3	132		
200	300UHB-ZK-1000-32	1000	32	1450	149.3	160		
201	300UHB-ZK-1180-31	1180	31	1450	142.3	160		
202	300UHB-ZK-850-40	850	40	1450	157.3	160		
203	300UHB-ZK-1050-28	1050	28	980	139.6	160		
204	300UHB-ZK-1200-30	1200	30	1450	168.9	180		
205	300UHB-ZK-850-51	850	51	1450	190.3	200	350 × 300	4250
206	300UHB-ZK-850-55	850	55	1450	218.2	250		
207	300UHB-ZK-1000-50	1000	50	1450	233.4	250		
208	300UHB-ZK-1100-48.8	1100	48.8	1450	242.3	250		
209	350UHB-ZK-1470-11	1470	11	720	76.8	90		
210	350UHB-ZK-1600-25	1600	25	980	186	200		
211	350UHB-ZK-2000-20	2000	20	980	186	200		
212	350UHB-ZK-2600-16	2600	16	980	194	220		
213	350UHB-ZK-1800-20	1800	20	980	168	180		
214	350UHB-ZK-2000-25	2000	25	980	223	250		
215	350UHB-ZK-1500-35	1500	35	980	228	250		
216	350UHB-ZK-2500-20	2500	20	980	233	250		
217	350UHB-ZK-2500-25	2500	25	980	282	300		
218	350UHB-ZK-2000-32	2000	32	980	293	300		

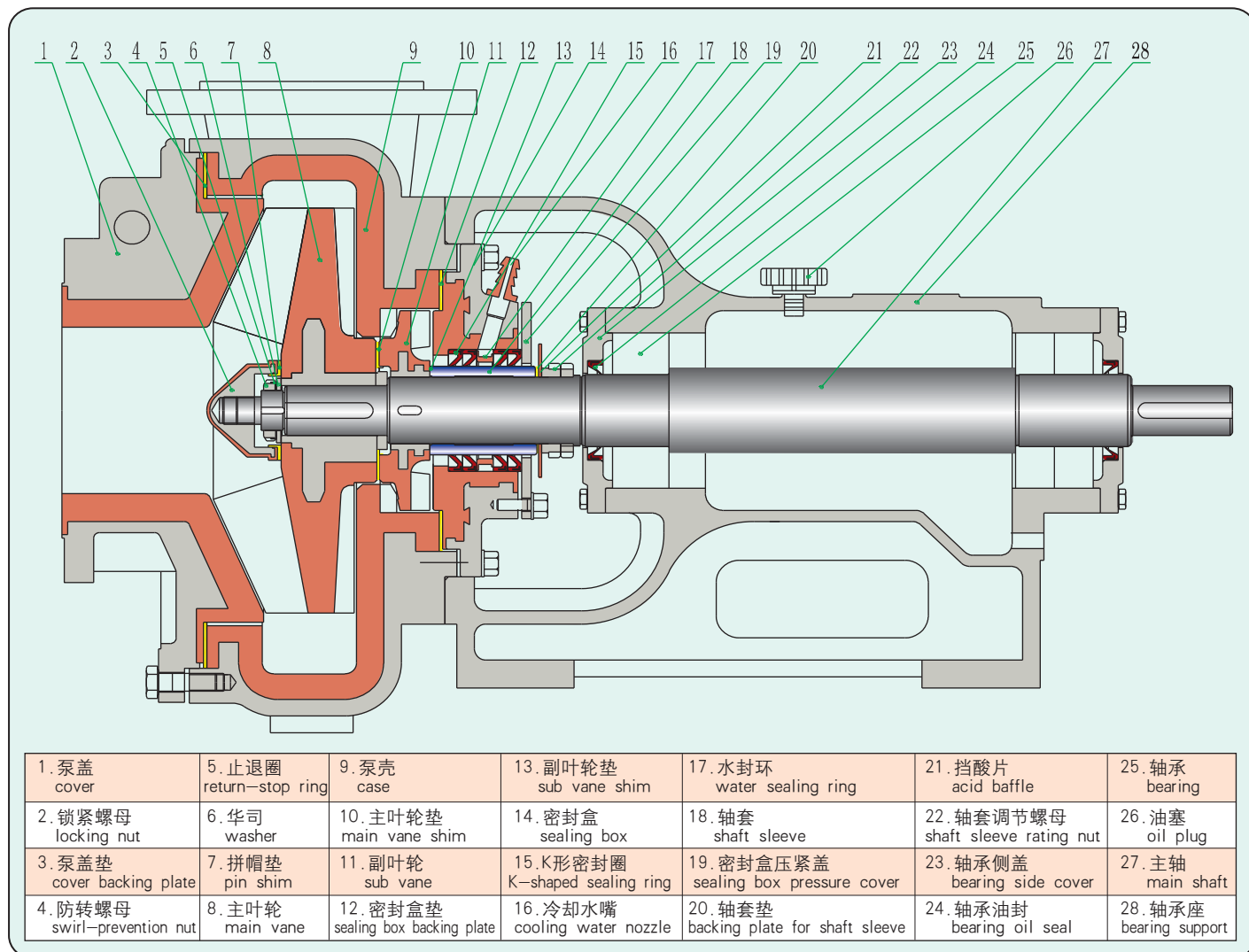
- ▲ 注：型号中的-B泵为泵壳结构改良型。  
 型号中的-AH泵为高扬程泵，其中泵壳，盖、叶轮及轴承座等与同规格泵不相通用。
- ▲ Note: Model code with "-B" represent the pump is case structure renovated.  
 "-AH" represent high hoisting height, the case, cover, vane and bearing support are different from the same spec's.

## 四、泵的结构简图 Structure Diagram of the Pumps

(一)、泵进口直径≤125mm时，（不含付叶轮） For inlet diameter ≤125mm (not including sub-vane) pumps



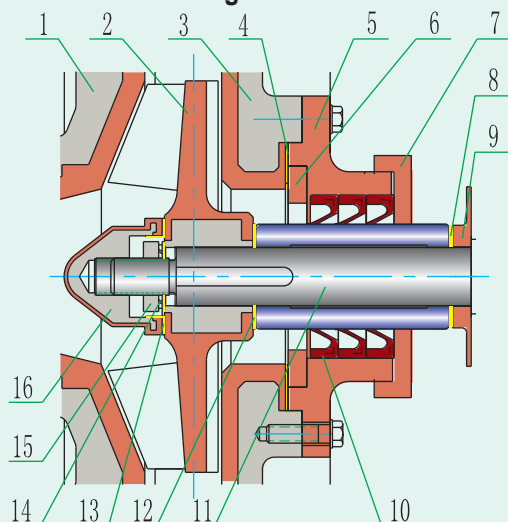
## (二)、泵进口直径&gt;125mm时, (含付叶轮) For inlet diameter &gt;125mm (including sub-vane) pumps



## 五、密封结构简图 Diagram of Sealing Structure

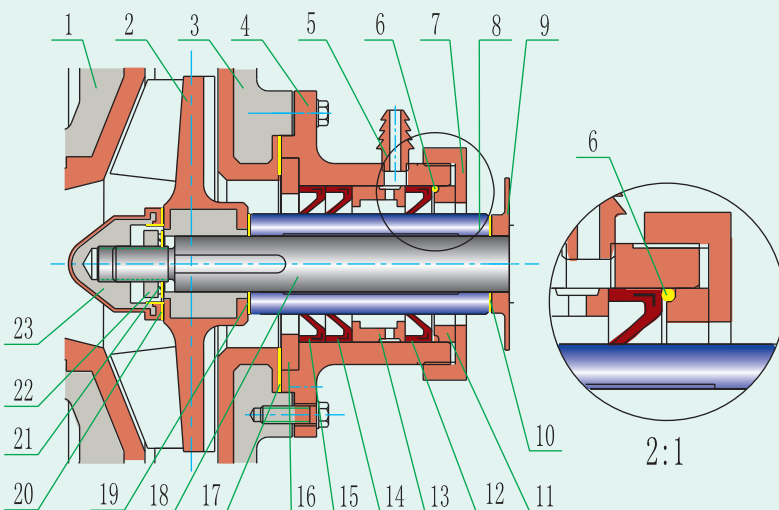
### 不带冷却水动力密封局部图

#### Partial Diagram of Dynamic Sealing w/o Cooling Water



### 带冷却水动力密封局部图

#### Partial Diagram of Dynamic Sealing with Cooling Water



1. 泵 盖 cover	7. 密封盒盖 sealing box cover	13. 锁紧螺母垫 locking nut plate	1. 泵 盖 cover	7. 密封盒盖 sealing box cover	13. 水封环 water sealing ring	19. 轴套垫 backing plate for shaft sleeve
2. 叶 轮 vane	8. 挡酸片垫 acid baffle plate	14. 弹垫 spring shim	2. 叶 轮 vane	8. 轴 套 shaft sleeve	14. K形圈 K-shaped ring	20. 锁紧螺母垫 locking nut plate
3. 泵 壳 case	9. 挡酸片 acid baffle	15. 防转螺母 swirl-prevention nut	3. 泵 壳 case	9. 挡酸片 acid baffle	15. K形圈 K-shaped ring	21. 弹 垫 spring shim
4. 密封盒垫 sealing box backing plate	10. K形密封圈 K-shaped sealing ring	16. 锁紧螺母 locking nut	4. 密封盒 sealing box	10. 挡酸片垫 acid baffle plate	16. 密封盒垫块 sealing box backing block	22. 防转螺母 swirl-prevention nut
5. 密封盒 sealing box	11. 主 轴 main shaft		5. 冷却水嘴 cooling water nozzle	11. 顶 圈 top ring	17. 密封盒垫床 sealing box backing base	23. 锁紧螺母 locking nut
6. 密封盒垫块 sealing box backing block	12. 轴套垫 backing plate for shaft sleeve		6. O形密封圈 O-shaped sealing ring	12. K形圈 K-shaped ring	18. 主 轴 main shaft	

## 六、启动、运行、维护及拆装程序说明 Instructions for Starting, Running, Maintenance & Disassembling

### (一)、启动、运行及维护 Starting, Running & Maintenance

#### 1.1 运行前的检查 Check before start

试运行前应先用手盘动联轴器或轴，检查转向是否正确，运转是否灵活，如盘不动或有异常声音，应及时检查，检查时先从外部用手检查联轴器是否水平，从轴承座上的油镜孔处查看润滑油的位置是否在油镜的中心线附近(太多应放掉一些，太少应加上一些)，边检查边盘动，如果问题依然存在，就要拆泵检查，(拆泵时请参考本说明书上的结构简图和拆装程序)清理异物，并和本厂联系协商解决方法。

Manually turn the shaft coupling or shaft before commissioning to see if its direction is correct and turning smoothly, if it is stuck or with abnormal noise, check to see if the coupling shaft to be horizontal, and inspect from the oil mirror hole on the bearing support to see if the position of lubrication oil is nearby the central line of the oil mirror (release some if it is too much, and add if too low), turning the shaft while checking, if the problem persists then it is required to open the case to check and clear foreign substances, and contact us for resolving the issue. (Please refer to diagram of structure and procedures found on this manual when disassembling.)

#### 2.2 开车步骤 Start steps

- 将泵内灌满液体
  - 及时打开进口阀门(如进口阀门为单向止回阀，就不需要人工操作)
  - 接通电源
  - 再打出口阀门
- Fill the pump with liquid;
  - Open the inlet valve timely (manual operation not needed for single check valve);
  - Turn-on power;
  - Open the outlet valve.

#### 3.3 运 行 Running

运行中如有异常声音，或有电机发热等不正常情况出现时，也应停机检查，检查方法和步骤同1.

When abnormality such as strange noise or heat motor occurs during running, stop to check the same way as 1.1.

#### 4.4 停 机 Stop Pump

- 先关闭出口处阀门
  - 切断电源，并及时关闭进口处阀门；(如进口阀门为单向止回阀，就不需要人工操作)。
- Close the outlet valve first.
  - Cut off power and close the inlet valve timely. (manual operation not needed for single check valve).

#### 5.5 维 护 Maintenance

- 轴承座内的润滑油应定期更换，正常情况六个月更换一次。
  - 寒冷季节，停泵后若有结冰现象，应先接通密封处冷却水，必要时可加热水进去解冻，之后用手盘动联轴器，直到运转灵活，再按照启动步骤开车。
  - 有冷却水装置的泵，开车前应先接通冷却水，泵正常运行时，可继续接通，若条件不允许也可停掉，冷却水的流量和压力都没有要求，自来水即可；
  - 泵在关闭出口阀门时的运行称为闭压运行状态，全塑泵或衬塑泵的闭压运行时间应尽可能减短，常温介质以不超过5分钟为限，高温介质最好不要超过2分钟；
  - 中分泵壳的泵，如进口150mm以上的泵，中分面处的密封塑料，因热胀冷缩尺寸有些变化，安装时应先将中分处的连接螺栓拧紧，再连接进口管路，以防中分面泄漏，此条对北方的用户尤其重要；
  - 泵不能承受进出口管道的重量，进口管路越短越好，泵出口到阀门处的垂直高度应尽可能短；
  - 保持电机上没有水迹，防止电机受潮。
- Replace the lubricating oil in the bearing support periodically, every six months under normal conditions.
  - If the pump freezes after use in cold weather, turn on cooling water on the sealing position and pour in hot water to defrost if necessary, then manually turn the coupling shaft until it turns smoothly, and start the pump in accordance with the procedures.
  - Turn on cooling water before starting for pumps equipped with water cooling mechanism, and keep it on under normal running, or turn it off if conditions not allow. There is no specific requirement for flow rate and pressure of the cooling water, tap water will be ok.
  - Running with outlet valve closed is called closed-pressure running status. For full plastic pump or plastic lining pump, ensure it runs in closed-pressure status as short as possible, limited to five minutes for ordinary temperature medium and two minutes for high temperature medium.
  - For half-case pumps such as pumps with inlet exceeds 150mm, the sealing plastics on the centring will expand or contract a little due to temperature change. When installation, fasten the connecting bolts on the centring first before connecting the inlet pipe to avoid leakage. This is of very importance to users in cold area.
  - The pumps will not withstand the weight of inlet and outlet pipes, keep the inlet pipes as short as possible and the vertical height from the outlet to the valve as low as possible.
  - Keep the motor from water, prevent it from get wet.



## (二)、拆装程序

## Disassembling

2.1 不带付叶轮的泵(进口直径 $\leq 125\text{mm}$ 的泵)For pumps without sub-vane(pumps with an inlet diameter  $\leq 125\text{mm}$ )

拆装顺序:(参照本说明书中的结构图)

- 松开泵壳9与泵盖1连接螺栓, 拆下泵盖。
- 松开锁紧螺母2(左旋螺纹)和防转螺母4(左旋螺纹), 拆下叶轮8。
- 松开泵壳9与轴承座26的连接螺栓, 拆下泵壳。
- 松开密封盒13与泵壳9的连接螺栓, 拆下密封盒。
- 旋开密封盒上的后压盖20, 取出K形密封圈15。

安装顺序与拆卸顺序相反, 需要注意的是:

- 将叶轮拼帽拼紧后, 检查一下叶轮与泵体之间的间隙, 此间隙要求在 $2\text{mm}$ 左右。
- 安装好泵盖后, 检查一下泵盖与叶轮之间的间隙(从出口处往里看), 此间隙应保证在 $2\text{mm}$ 左右, 高温介质用泵, 此间隙要求在 $2.5\text{mm}$ 左右。
- 叶轮与泵体之间的间隙达不到要求的, 可通过增减叶轮与轴套之间的垫片来进行调整。
- 泵盖与叶轮之间的间隙达不到要求的, 可通过增减泵体与泵盖之间的垫片来进行调整。

Disassemble procedure: (refer to structure diagrams)

- Loose the bolts connecting the case "9" and the cover "1", take off the cover.
- Loose the locking nut "2" (minus screw) and the swirl-prevention nut "4" (minus screw), take off the vane "8".
- Loose the bolts connecting the case "9" and the bearing support "26", take off the case.
- Loose the bolts connecting the sealing box "13" and the case "9", take off the sealing box.
- Unscrew the sealing box pressure cover "20", take out K-shaped ring "15".

It is the opposite to assemble, but take care of the followings:

- Check the clearance between the vane and the body after fastening the pin of the vane, the required clearance is to be about  $2\text{mm}$ .
- Check the clearance (look inside from outlet) between the cover and the vane after installing the cover, ensure clearance is to be about  $2\text{mm}$ . For pumps for high temperature medium, the required clearance is to be about  $2.5\text{mm}$ .
- If the clearance between the vane and the body is not within the requirement, adjust by add or remove the shim between the vane and the shaft sleeve.
- If the clearance between the cover and the vane is not within the requirement, adjust by add or remove the shim between the body and the cover.

2.2 带付叶轮的泵(进口直径 $> 125\text{mm}$ 的泵)For pumps with sub-vane (pumps with an inlet diameter  $> 125\text{mm}$ )

拆装顺序:(参照说明书中的结构图)

- 松开泵壳9与泵盖1连接螺栓, 拆下泵盖。
- 松开锁紧螺母2(左旋螺纹)和防转螺母4(左旋螺纹), 拆下叶轮8。
- 松开泵壳9与轴承座28的连接螺栓, 密封盒14与泵壳9之间的连接螺栓, 拆下泵壳9。
- 依次拆下付叶轮11, 密封盒14, K形密封圈15, 轴套18。

安装顺序与拆卸顺序相反, 需要注意的是:

- 将叶轮拼帽与挡水圈后的螺母相对拼紧后, 检查一下叶轮与泵体之间的间隙, 此间隙要求在 $2.5\text{mm}$ 左右
- 安装好泵盖后, 检查一下泵盖与叶轮之间的间隙(从出口处往里看), 此间隙应保证在 $2\text{mm}$ 左右, 高温介质用泵, 此间隙要求在 $2.5\text{mm}$
- 叶轮与泵体之间的间隙不符合要求的, 可通过增减叶轮与轴套之间的垫片来进行调整
- 泵盖与叶轮之间的间隙不符合要求的, 可通过增减泵体与泵盖之间的垫片来进行调整

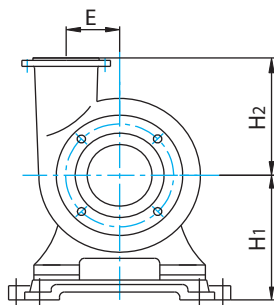
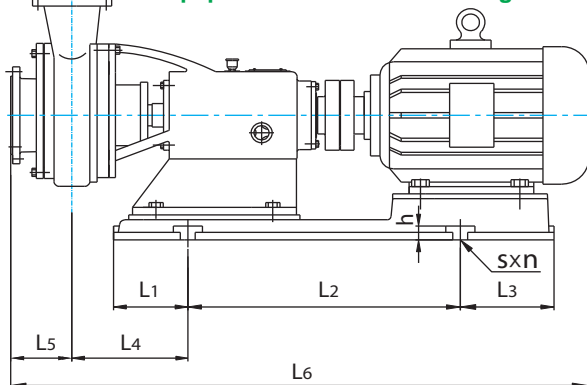
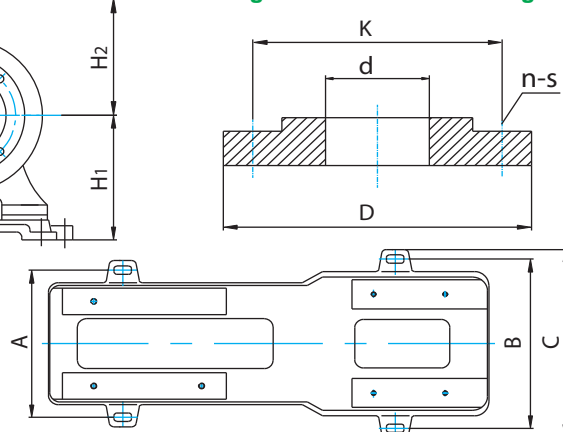
Disassemble procedure: (refer to structure diagrams)

- Loose the bolts connecting the case "9" and the cover "1", take off the cover.
- Loose the locking nut "2" (minus screw) and the swirl-prevention nut "4" (minus screw), take off the vane "8".
- Loose the bolts connecting the case "9" and the bearing support "28", and the bolts connecting the sealing box "14" and the case "9", take off the case.
- Take off in order the sub vane "11", the sealing box "14", the K-shaped ring "15", the shaft sleeve "18".

It is the opposite to assemble, but take care of the followings:

- Check the clearance between the vane and the body after fastening relatively the pin of the vane and the nuts behind the dash plate, the required clearance is to be about  $2.5\text{mm}$ .
- Check the clearance (look inside from outlet) between the cover and the vane after installing the cover, ensure clearance is to be about  $2\text{mm}$ . For pumps for high temperature medium, the required clearance is to be about  $2.5\text{mm}$ .
- If the clearance between the vane and the body is not within the requirement, adjust by add or remove the shim between the vane and the shaft sleeve.
- If the clearance between the cover and the vane is not within the requirement, adjust by add or remove the shim between the body and the cover.

## 七、外型及安装尺寸 Overall and Installation Dimensions

A-1、泵进口直径 $\leq 125\text{mm}$ 时的安装尺寸图Diagram of Installation Dimensions for Pumps with Inlet Diameter  $\leq 125\text{mm}$ A. 设备基础图  
Equipment Foundation DrawingB. 泵进出口法兰简图  
Diagram of Inlet Outlet Flanges

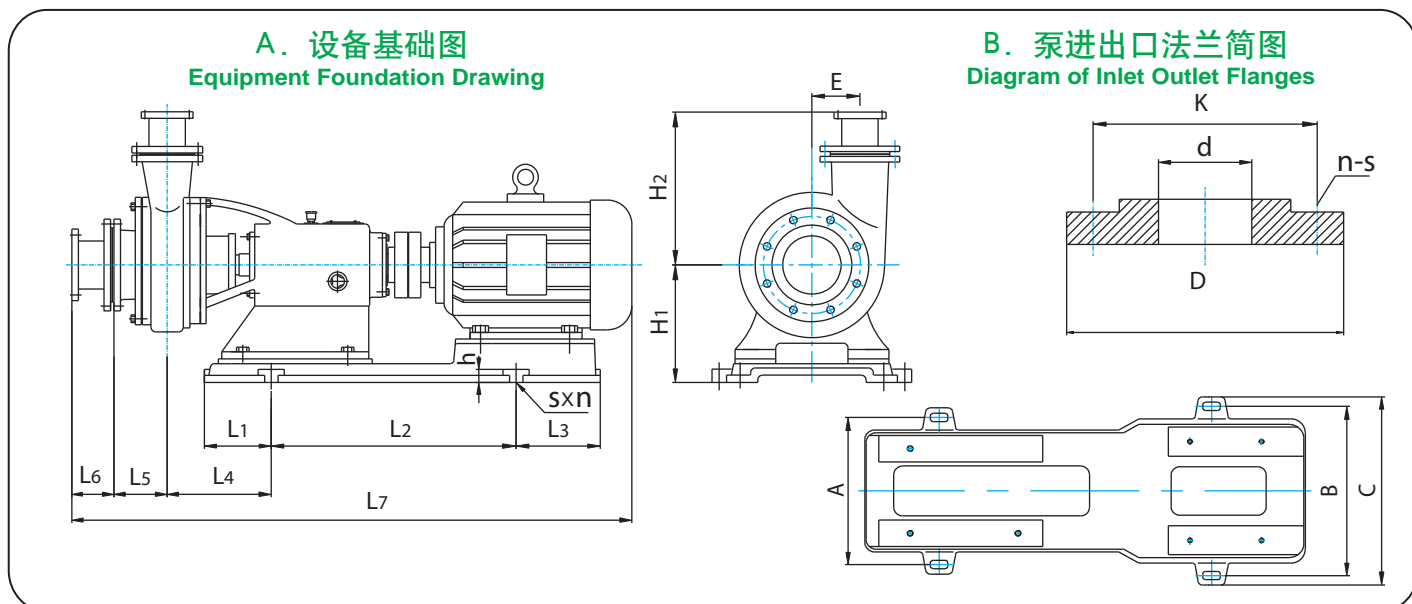
## A-2、安装尺寸表 Chart of Installation Dimensions

泵性能参数序号 Performance Parameter No	型号 Model	配套电机 Motor	A	B	C	E	H1	H2	L1	L2	L3	L4	L5	L6	h	s × n
1-3、5-8	32UHB-ZK	0.75-1.1KW-2级	260	260	315	78	160	150	100	335	100	210	115	780	25	18 × 4
4、14	32UHB-ZK	0.75KW-4级	260	260	315	78	160	150	100	335	100	210	115	780	25	18 × 4
9-13	32UHB-ZK	1.5~2.2KW-2级	260	260	315	78	165	150	100	335	100	210	115	825	25	18 × 4
15-16	40UHB-ZK	2.2KW-2级	260	260	315	86	160	165	100	335	100	230	120	845	25	18 × 4
17-19	40UHB-ZK	3KW-2级	260	260	315	86	170	165	120	335	120	245	120	900	25	18 × 4
20	50UHB-ZK	1.1KW-4级	320	320	380	95	210	180	160	400	160	270	125	1010	25	20 × 4
21-24	50UHB-ZK	4KW-2级	320	320	380	95	210	180	160	400	160	270	125	1020	25	20 × 4
25-29	50UHB-ZK	5.5-7.5KW-2级	320	320	380	95	210	180	160	400	160	270	125	1060	25	20 × 4
30	65UHB-ZK	1.1KW-4级	320	320	380	105	210	190	160	400	160	270	125	920	25	20 × 4
31-36	65UHB-ZK	5.5-7.5KW-2级	320	320	380	105	210	190	160	400	160	270	125	1060	25	20 × 4
37	65UHB-ZK(高)	11KW-4级	320	320	380	123	210	205	160	400	160	280	135	920	35	20 × 4
38-39	65UHB-ZK(高)	2.2KW-4级	320	320	380	123	210	205	160	400	160	280	135	920	35	20 × 4
40-41	65UHB-ZK(高)	5.5-7.5KW-2级	320	320	380	123	210	205	160	400	160	280	135	1070	25	20 × 4
42-45	65UHB-ZK(高)	11-15KW-2级	320	370	435	123	225	205	165	525	165	280	135	1215	35	25 × 4
46	65UHB-ZK-B	7.5KW-2级	320	320	380	123	210	205	160	400	160	280	135	1070	25	20 × 4
47-50	65UHB-ZK-B	11-15KW-2级	320	370	435	123	225	205	165	525	165	280	135	1210	30	25 × 4
51	65UHB-ZK-B	18.5KW-2级	320	370	435	123	225	205	165	525	165	280	135	1265	30	25 × 4
52	65UHB-ZK	4KW-4级	320	320	380	134	210	216	165	400	200	270	130	1000	25	20 × 4
53-55	65UHB-ZK	5.5-7.5KW-4级	320	320	380	134	210	216	165	400	200	270	130	1060	25	20 × 4
56-57	65UHB-ZK-AH	11-15KW-2级	410	460	530	148	280	255	190	705	190	335	125	1540	40	25 × 4
58	65UHB-ZK-AH	18.5KW-2级	410	460	530	148	280	255	190	705	190	335	125	1540	40	25 × 4
59	65UHB-ZK-AH	22KW-2级	410	460	530	148	280	255	190	705	190	335	125	1540	40	25 × 4
60、61	80UHB-ZK	2.2-3KW-4级	320	320	380	125	210	220	160	400	160	270	140	1045	25	20 × 4
62-64	80UHB-ZK	7.5KW-2级	320	320	380	125	210	220	160	400	160	270	140	1110	25	20 × 4
65-70	80UHB-ZK	11-15KW-2级	320	370	435	125	225	220	165	525	165	270	140	1200	35	20 × 4
71	80UHB-ZK	18.5KW-2级	320	370	435	125	225	220	165	570	165	270	140	1300	35	20 × 4
79-81	80UHB-ZK-AH	15-18.5KW-2级	410	460	530	148	280	255	190	705	190	335	125	1540	40	20 × 4
82	80UHB-ZK-AH	22KW-2级	410	460	530	148	280	255	190	705	190	335	125	1540	40	20 × 4
83-84	80UHB-ZK-AH	30KW-2级	395	485	555	148	305	255	210	670	210	335	125	1555	40	20 × 4
85	100UHB-ZK	5.5KW-4级	410	460	530	130	280	230	190	705	190	305	135	1220	40	20 × 4
86-88	100UHB-ZK	11-15KW-2级	410	460	530	130	280	230	190	705	190	305	135	1400	40	20 × 4
89-98	100UHB-ZK	18.5KW-2级	410	460	530	130	280	230	190	705	190	305	135	1420	40	20 × 4
99-101	100UHB-ZK	22KW-2级	410	460	530	130	280	230	190	705	190	305	135	1440	40	20 × 4
102-106	100UHB-ZK	30KW-2级	395	485	555	130	305	230	210	670	210	335	135	1510	40	20 × 4
119-123	100UHB-ZK-AH	30-37KW-2级	395	485	555	148	305	255	210	670	210	360	125	1540	40	20 × 4
124	125UHB-ZK	18.5KW-2级	410	460	530	131	280	210	190	705	190	315	165	1460	50	30 × 4
125-126	125UHB-ZK	22KW-2级	410	460	530	131	280	210	190	705	190	315	165	1480	50	30 × 4
127-132	125UHB-ZK	30KW-2级	395	485	555	131	305	210	210	670	210	345	165	1560	50	30 × 4
133	125UHB-ZK	11KW-4级	410	460	530	131	280	210	190	705	190	315	165	1410	50	30 × 4

▲ 注：型号中的-AH泵为高扬程泵，其中泵壳，盖、叶轮及轴承座等与同规格泵不相通用。

Note: "-AH" represent high hoisting height, the case, cover, vane and bearing support are different from the same spec's.

## B-1、泵进口直径>125mm时的安装尺寸图 Diagram of Installation Dimensions for Pumps with Inlet Diameter >125mm



## B-2、安装尺寸表 Chart of Installation Dimensions

泵性能参数序号 Performance Parameter No	型号 Model	配套电机 Motor	A	B	C	E	H <sub>1</sub>	H <sub>2</sub>	L <sub>1</sub>	L <sub>2</sub>	L <sub>3</sub>	L <sub>4</sub>	L <sub>5</sub>	L <sub>6</sub>	L <sub>7</sub>	h	s×n
72-74	80UHB-ZK	11-15KW-4级	510	510	580	228	370	450	250	850	190	360	195	150	1770	50	30×4
75-77	80UHB-ZK	18.5-22KW-4级	510	510	580	228	370	450	250	850	190	360	195	150	1830	50	30×4
78	80UHB-ZK	30KW-4级	510	510	580	228	370	450	250	850	190	360	195	150	1890	50	30×4
107	100UHB-ZK	22KW-4级	510	510	580	240	370	460	250	850	190	360	200	150	1840	50	30×4
108	100UHB-ZK	30KW-4级	510	510	580	240	370	460	250	850	190	360	200	150	1900	50	30×4
109-116	100UHB-ZK	37-45KW-4级	510	610	680	240	370	460	250	935	250	360	200	150	2010	50	30×4
117-118	100UHB-ZK	55KW-4级	510	660	745	240	390	460	245	1000	245	340	200	150	2080	50	30×4
134	125UHB-ZK	11KW-6级	510	510	580	240	370	460	250	850	190	360	200	150	1740	50	30×4
135-139	125UHB-ZK	30KW-4级	510	510	580	240	370	460	250	850	190	360	200	150	1840	50	30×4
140-143	125UHB-ZK	37-45KW-4级	510	610	680	240	370	460	250	935	250	360	200	150	2010	50	30×4
144-148	125UHB-ZK	55KW-4级	510	660	745	240	390	460	245	1000	245	340	200	150	2080	60	30×4
149-152	150UHB-ZK	30KW-4级	420	536	620	190	350	430	250	700	300	325	200	150	1800	50	30×4
153	150UHB-ZK	11KW-6级	420	536	620	190	350	430	250	700	300	325	200	150	1700	50	30×4
154	150UHB-ZK	22KW-4级	420	536	620	190	350	430	250	700	300	325	200	150	1770	50	30×4
155-157	150UHB-ZK	37KW-4级	420	586	670	190	350	430	250	840	190	325	200	150	1850	50	30×4
158、159	150UHB-ZK	15KW-6级	510	610	680	223	370	470	250	935	250	345	215	150	1895	45	30×4
160	150UHB-ZK	11KW-6级	510	610	680	223	370	470	250	935	250	345	215	150	1875	45	30×4
161	150UHB-ZK	37KW-4级	510	610	680	223	370	470	250	935	250	345	215	150	1970	45	30×4
162-165	150UHB-ZK	45KW-4级	510	610	680	223	370	470	250	935	250	345	215	150	2000	45	30×4
166	150UHB-ZK-AH	55KW-4级	510	660	745	282	390	515	245	1000	245	350	210	150	2100	60	30×4
167-168	150UHB-ZK-AH	75KW-4级	510	660	745	282	390	515	245	1000	345	360	210	150	2185	60	30×4
169-170	200UHB-ZK	18.5KW-6级	510	610	680	235	370	470	250	935	250	360	210	150	1935	60	30×4
171	200UHB-ZK	30KW-6级	510	610	680	235	370	470	250	935	250	360	210	150	2010	60	30×4
172-175	200UHB-ZK	45KW-4级	510	610	680	235	370	470	250	935	250	360	210	150	2010	45	30×4
176-177	200UHB-ZK	55KW-4级	510	660	745	235	390	470	245	1000	245	375	120	150	2130	60	30×4
178-181	200UHB-ZK	75KW-4级	510	660	745	235	390	470	245	1000	345	360	115	150	2180	60	30×4
182	200UHB-ZK-AH	90KW-4级	770	770	840	310	550	540	630	1200	465	450	245	150	2535	60	30×4
183	200UHB-ZK-AH	110KW-4级	770	770	840	310	550	540	630	1200	465	450	245	150	2770	60	30×4
184	200UHB-ZK-AH	132KW-4级	770	770	840	310	550	540	630	1200	465	450	245	150	2810	60	30×4
185	200UHB-ZK-AH	160KW-4级	770	770	840	310	550	540	630	1200	465	450	245	150	2810	60	30×4
186	250UHB-ZK	30KW-6级	770	770	840	310	550	510	630	1200	465	450	260	150	2500	60	30×4
187	250UHB-ZK	37KW-6级	770	770	840	310	550	510	630	1200	465	450	260	150	2530	60	30×4
188	250UHB-ZK	75KW-4级	770	770	840	310	550	510	630	1200	465	450	260	150	2600	60	30×4
189-190	250UHB-ZK	90KW-4级	770	770	840	310	550	510	630	1200	465	450	260	150	2630	60	30×4
191-193	250UHB-ZK	110KW-4级	770	770	840	310	550	510	630	1200	465	450	260	150	2765	60	30×4
194	300UHB-ZK	55KW-6级	880	880	950	390	600	570	330	850x2	440	160	280	150	2950	60	35×6
195	300UHB-ZK	75KW-6级	880	880	950	390	600	570	330	850x2	440	160	280	150	3060	60	35×6
196-197	300UHB-ZK	110KW-4级	880	880	950	390	600	570	330	850x2	440	160	280	150	3060	60	35×6
198、199	300UHB-ZK	132KW-4级	880	880	950	390	600	570	330	850x2	440	160	280	150	3090	60	35×6
200-202	300UHB-ZK	160KW-4级	880	880	950	390	600	570	330	850x2	440	160	280	150	3090	60	35×6
203	300UHB-ZK	160KW-6级	880	880	950	390	600	570	330	850x2	440	160	280	150	3120	60	35×6
204	300UHB-ZK	180KW-4级	880	880	950	390	600	570	330	850x2	440	160	280	150	3090	60	35×6
205	300UHB-ZK	200KW-4级	880	880	950	390	600	570	330	850x2	440	160	280	150	3090	60	35×6
206-208	300UHB-ZK	250KW-4级	880	880	950	390	600	570	330	850x2	440	160	280	150	3120	60	35×6
209	350UHB-ZK	90KW-8级	900	900	1100	425	680	635	325	1000x2	325	145	315	150	3200	60	35×6
210、211	350UHB-ZK	200KW-6级	900	900	1100	425	680	635	325	1000x2	325	145	315	150	3430	60	35×6
212	350UHB-ZK	220KW-6级	900	900	1100	425	680	635	325	1000x2	325	145	315	150	3430	60	35×6
213	350UHB-ZK	180KW-6级	900	900	1100	425	680	635	325	1000x2	325	145	315	150	3430	60	35×6
214-216	350UHB-ZK	250KW-6级	900	900	1100	425	680	635	325	1000x2	325	145	315	150	3660	60	35×6
217、218	350UHB-ZK	300KW-6级	900	900	1100	425	680	635	325	1000x2	325	145	315	150	3660	60	35×6

▲ 注：型号中的-AH泵为高扬程泵，其中泵壳，盖、叶轮及轴承座等与同规格泵不相通用。

Note: "-AH" represent high hoisting height, the case, cover, vane and bearing support are different from the same spec's.

## C、法兰连接尺寸表 Chart of flange connection dimensions

引用标准：GB9116-88 PN 1.0Mpa Standard: GB9116-88PN1.0Mpa

d	25	32	40	50	65	80	100	125	150	200	250	300	350
D	115	140	150	165	185	200	220	250	285	340	395	445	505
K	85	100	110	125	145	160	180	210	240	295	350	400	460
n-s	4-Ø14	4-Ø18				8-Ø18			8-Ø22		12-Ø22		16-Ø22

注：1. 进口≥150mm的泵，泵的出口位置与图示相反。

2. 本厂所有系列泵所配进出口法兰的公称压力均为1.0Mpa，标准代号为：法兰D-10 GB9116-88，D为公称通径。

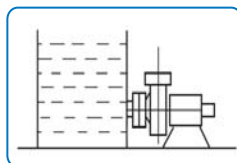
3. 序号：指本书前面性能表中所列的序号。

4. 表中所列L6尺寸均为配二级电机时泵的总长度尺寸，若配4级电机，L6则随电机长度减小而减小。



- Note:**
1. For pumps with inlet  $\geq 150\text{mm}$ , the outlet position is the opposite of what is illustrated in the diagram.
  2. The nominal pressure of inlet outlet flanges for all of our pumps is 1.0Mpa. Standard code: Flange D-10 GB9116-88, D means inside nominal diameter.
  3. Order number: refer to numbers in the chart of performance parameters.
  4. Data on the L6 column is the total length of the pumps equipped with grade two motor, if grade four motor is equipped then the length should be reduced accordingly.

## 八、在几种常见的槽位状况下、泵的安装示意及说明 Installation Diagram and Instruction for Typical Tank Conditions

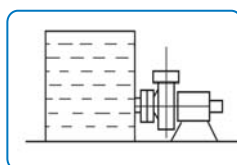


### A. 高位槽正压状态

特点说明：泵安装在储槽的底部，储槽内介质处于正压状态，泵进口处阀门打开时，储槽的液体能自流到泵腔中，这是UHB-ZK型耐腐耐磨泵最理想的安装方式。

### A. Head Tank Positive Pressure

Characteristics: the pump is positioned on the bottom of the tank and the medium is in positive pressure status, upon opening the inlet valve the liquid is flowed by itself into the pump. **This is the most ideal installation type for the UHB-ZK series corrosion and abrasion resistant pumps.**

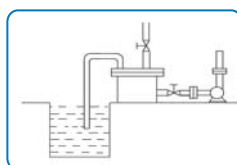


### B. 高位槽负压状态

特点说明：泵安装在储槽的底部，密闭的储槽处于负压状态，这种状态选泵，必须弄清储槽中负压的确切数据，再和本公司联系，方可定型。

### B. Head Tank Negative Pressure

Characteristics: the pump is positioned on the bottom of the tank and the medium is in negative pressure status in the closed tank. For the selection of pumps for this application, obtain precise data of the negative pressure in the tank and then contact us for deciding.

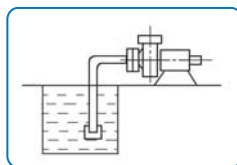


### C. 低位槽不装底阀装虹吸桶状态

特点说明：泵安装在储槽的上部，在进口管道靠近泵进口处安装一帮助启动的虹吸桶，第一次启动泵之前需将虹吸桶中灌满液体，以后就不需要再灌，虹吸桶的制作可根据介质性的不同选用相适应的材料和制造工艺，虹吸桶的制作要求就是密封性好，不能漏水漏气，虹吸桶大小的计算方法如下： $V = (3 \sim 5) \times \frac{\pi d^2}{4} \times L$  d: 进口管直径，L: 进口管总长，V: 虹吸桶容积，根据计算出的容积和现有材料的尺寸，再确定虹吸桶的直径和高度。

### C. Lower Tank w/o Bottom Valve but with Siphon-Tank

Characteristics: the pump is positioned above the tank and a siphon-tank is installed nearing the inlet of the pump to help start it. Fill liquid fully in the siphon-tank before first use, and no need to do it later. Produce the siphon-tank with proper material and process according to the properties of the medium, the most important requirement of the siphon-tank is its tightness, no leakage allowed. Use the following formula to calculate the size required of the siphon-tank:  $V = (3 \sim 5) \times \frac{\pi d^2}{4} \times L$  d: inlet diameter; L: total length of the inlet pipe; V: volume of the siphon-tank. The decide the diameter and height of the siphon-tank according to the volume and materials available.



### D. 低位槽装底阀状态

特点说明：泵安装在储槽的上部，进口管道底部需要安装底阀，每次启动泵之前，都须将泵腔内灌满液体，切不可开空车。

### D. Lower Tank with Bottom Valve

Characteristics: the pump is positioned above the tank and a bottom valve is installed on the bottom end of the inlet pipe. For every start, fill liquid fully into the pump, no empty running allowed.

## 九、主要零部(配)件 Main Parts & Accessories

名称 Description	材质 Material	名称 Description	材质 Material	备注 Remark	名称 Description	材质 Material	备注 Remark
泵盖 cover	QT/UHMWPE	轴套 shaft sleeve	Si <sub>3</sub> N <sub>4</sub>	或99瓷 or 99 ceramics	垫床 shim	F <sub>26</sub> B	泵体与密封盒之间 between body and sealing box
泵体 body	QT/UHMWPE	K形密封圈 K-shaped sealing ring	F <sub>26</sub> B	每组3-4只 3-4 pcs per set	密封盒 sealing box	玻璃钢 FRP	或QT/UHMWPE or QT/UHMWPE
叶轮 vane	1Cr18Ni9/UHMWPE	垫床 shim	F <sub>26</sub> B	叶轮与拼帽之间 between vane and pin			
拼帽 pin	A <sub>3</sub> /UHMWPE	垫床 shim	F <sub>26</sub> B	叶轮与轴套之间 between vane and shaft sleeve			



# 专业保障品质

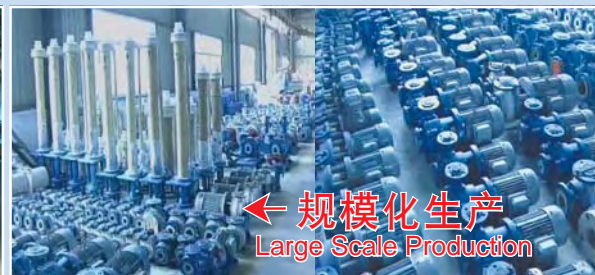
Guaranteed Quality



安装生产现场  
Inside Assembly Workshop



大型泵机测试  
Testing Large Pump



规模化生产  
Large Scale Production

宜兴市宙斯泵业有限公司

Yixing Zeus Pump Co., Ltd.

地址 Add: 江苏省宜兴市张泽 Zhangzhe, Yixing, Jiangsu, China

网址 Home Page: <http://www.zsby.com>

邮编 ZIP: 214225

网络实名 Web Name: 宙斯泵业

传真 FAX: +86 510-

细分销售专线电话 Sales Hotline: +86 510-